





The Old and New Towns of Edinburgh World Heritage Site

- 4500 historic buildings
- 24,000 residents (city population circa 450,000)
- Scotland's capital since 1347
- Second biggest financial centre in the UK
- 50,000 workers



Edinburgh World Heritage

- Charged with implementation of the Management Plan
- Professional team
- Independent board, partnership working:
- Funded jointly by the City of Edinburgh and Scottish Government via Historic Scotland

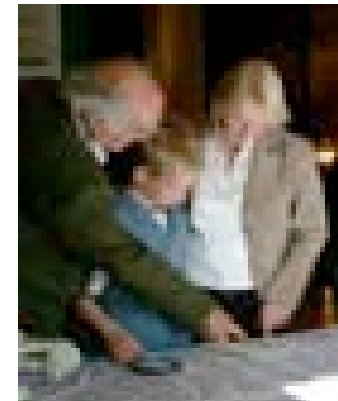
Influence & Monitor



Conserve & Enhance



Promote & Educate







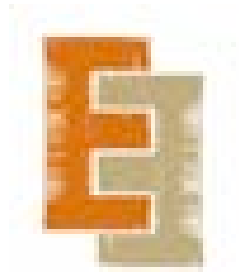






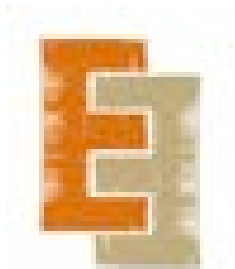
Energy Heritage

A marriage of building conservation and energy saving in listed buildings



Replicable improvements

- Shutter Restoration
- Secondary glazing
- A rated boilers
- Floor Insulation
- Smart Meters
- Energy efficient lighting
- Top up loft insulation
- Draught proofing
- Energy efficiency advice



A methodology: stage 1

Structural and material repair first:

1000 buildings in the WHS over 30 years



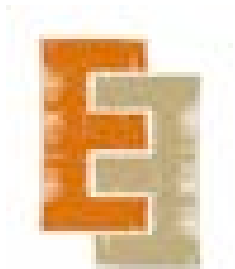
A methodology: stage 2

Install maximum possible culturally sensitive energy saving measures based on pilot project and research



A methodology: stage 3

Install renewable energy devices to further enhance the energy efficiency in listed buildings: roll out programme to tie in with EWH repairs programmes?



Conclusions

- Edinburgh: 30 years of positive change
- Sustainability of buildings ~ sustainability of communities
- Careful use of public funds to steer and influence change in a positive manner
- Creating a climate for the right kind of change

